



# OVS

OVERLAND VEHICLE SYSTEMS

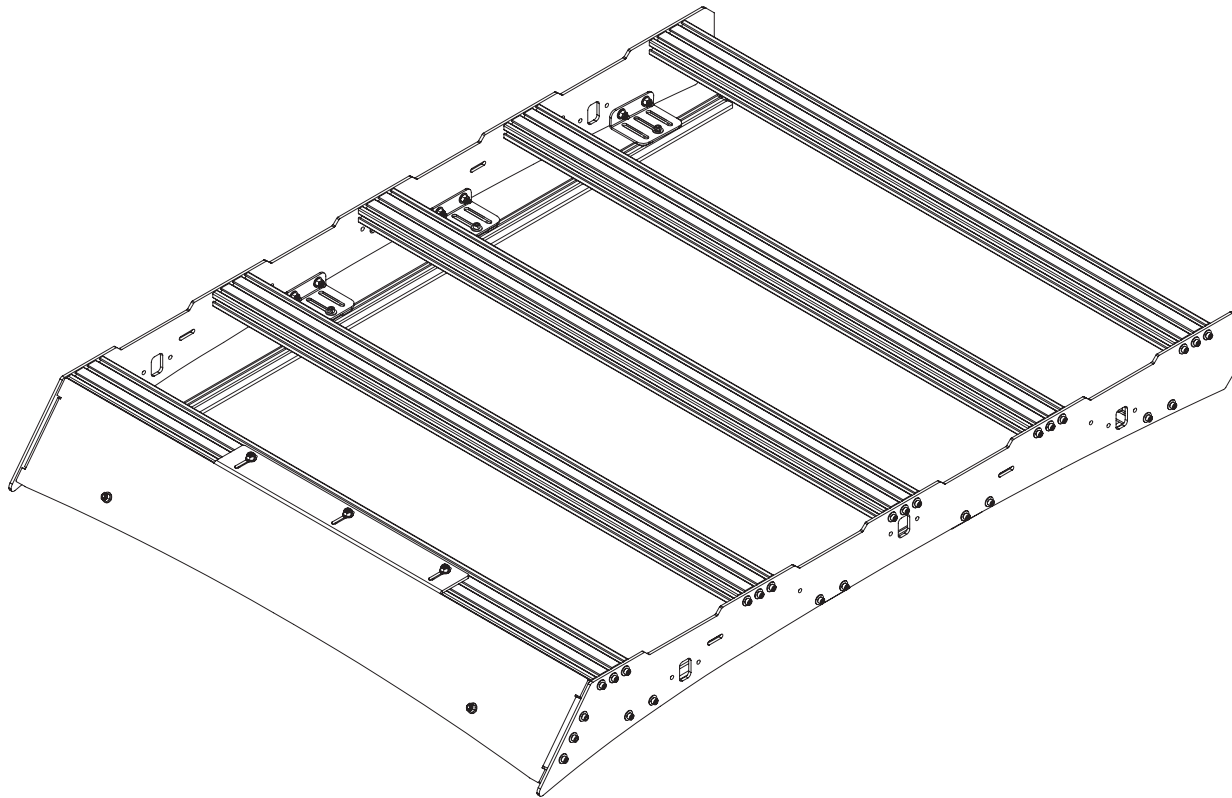
## **TOOLS NEEDED:**

- 3/16" HEX DRIVER
- 7/16" WRENCH
- SAFETY GLASSES

## **OPTIONAL ITEMS NEEDED:**

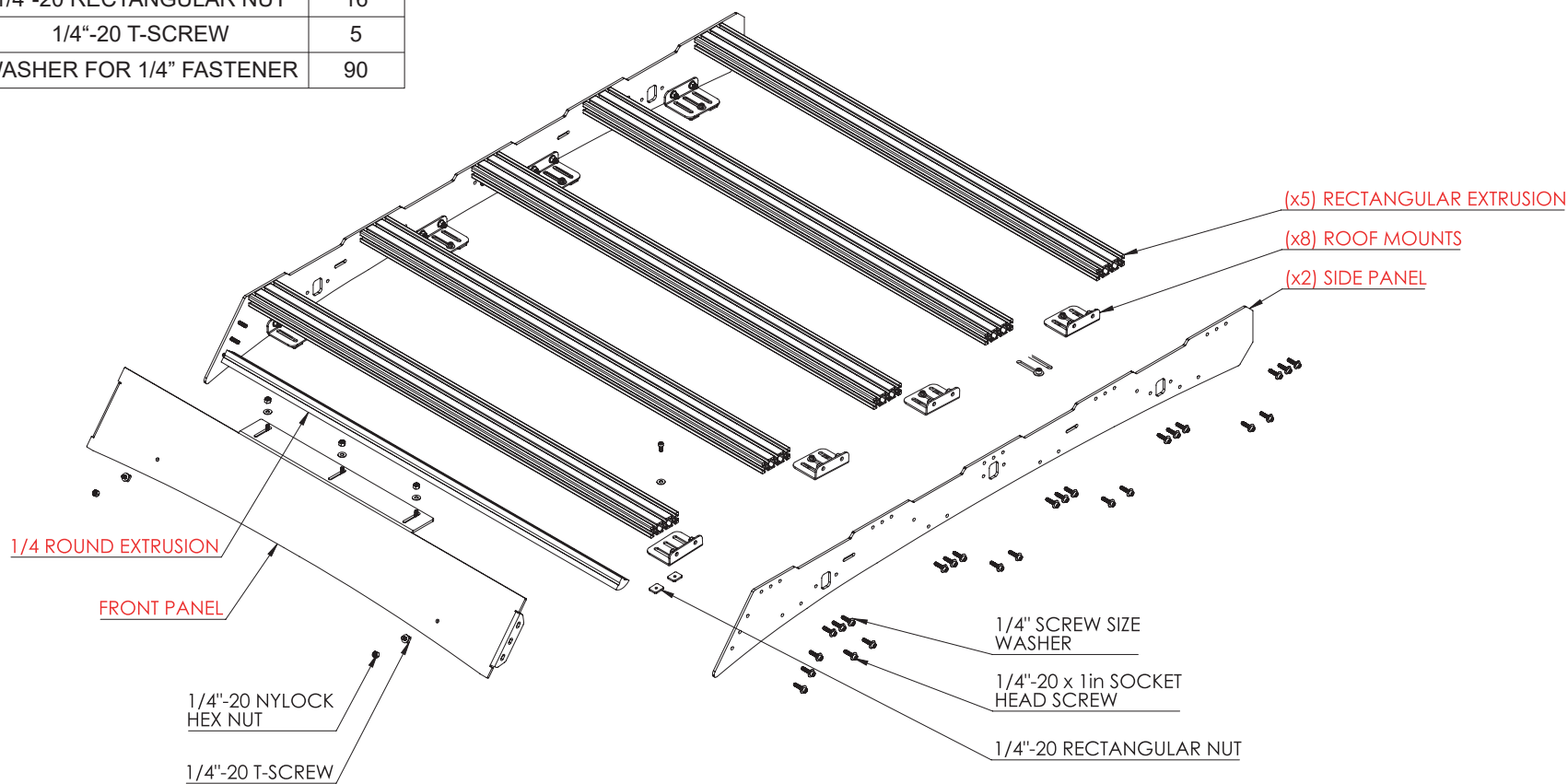
- MOVING BLANKET TO PROTECT TOP OF VEHICLE

Thank you for purchasing the RUFF RAX roof rack!  
Please follow step by step instructions provided.  
Any issues please contact [sales@overlandvehiclesystems.com](mailto:sales@overlandvehiclesystems.com)



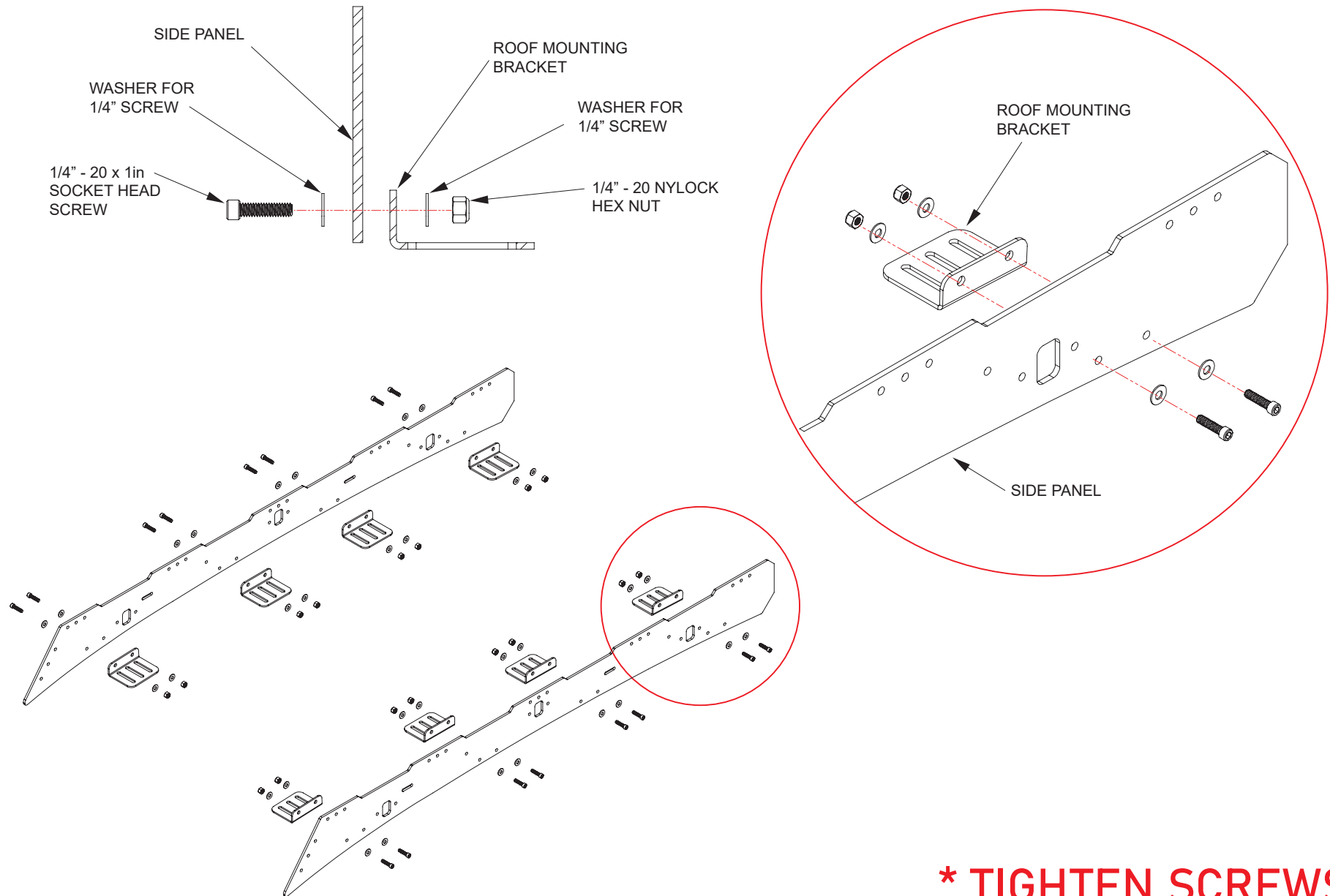
\*FRONT PLATE MAY VARY PER IMAGE

	PART NAME	QTY
	FRONT PANEL	1
	SIDE PANEL	2
	1/4 ROUND EXTRUSION	1
	RECTANGULAR EXTRUSION	5
	ROOF MOUNTING BRACKET	8
	1/4"-20 x 1in SOCKET SCREW	89
	1/4"-20 NYLOCK HEX NUT	21
	1/4"-20 RECTANGULAR NUT	16
	1/4"-20 T-SCREW	5
	WASHER FOR 1/4" FASTENER	90



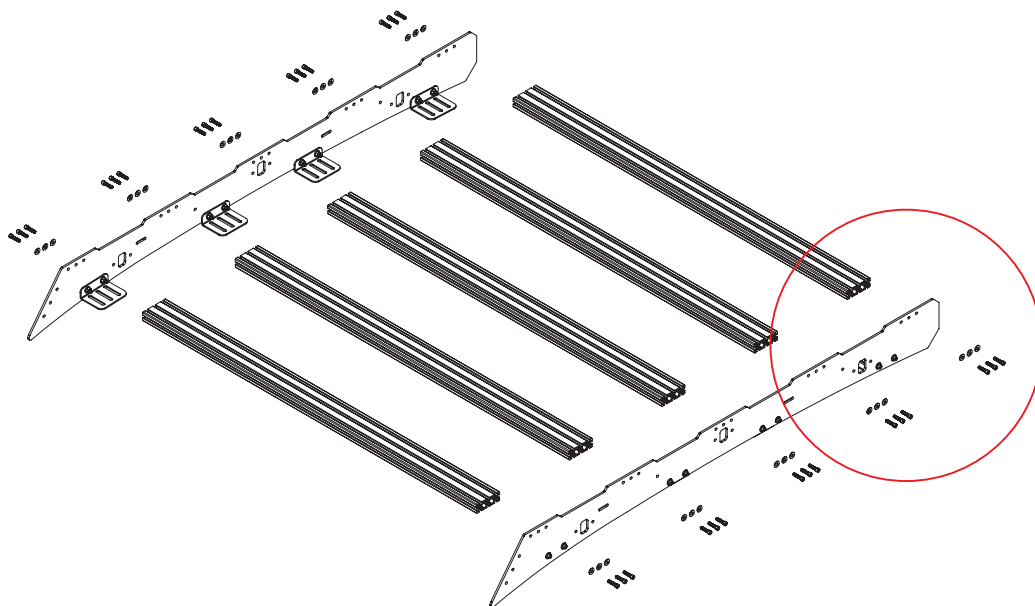
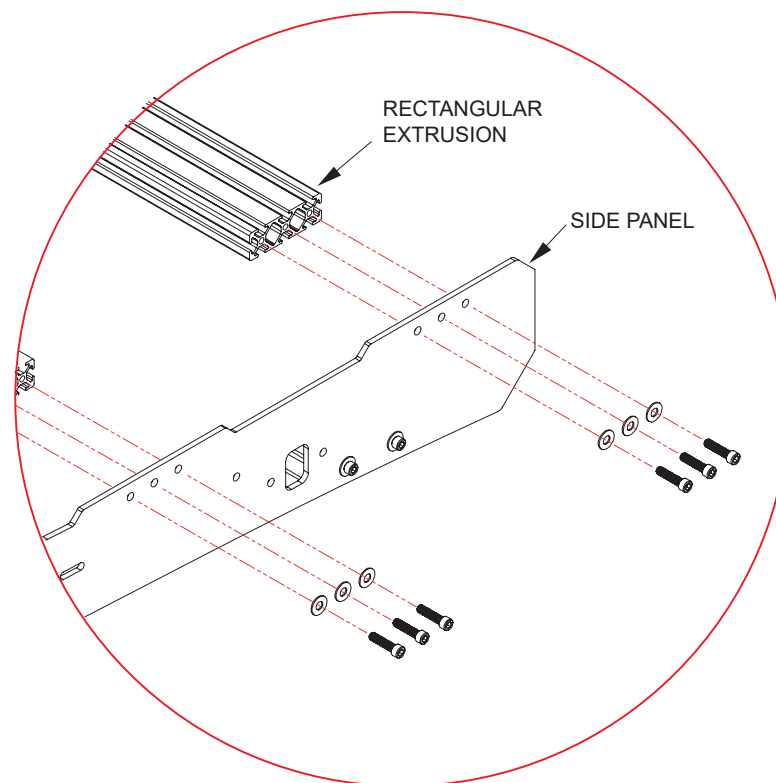
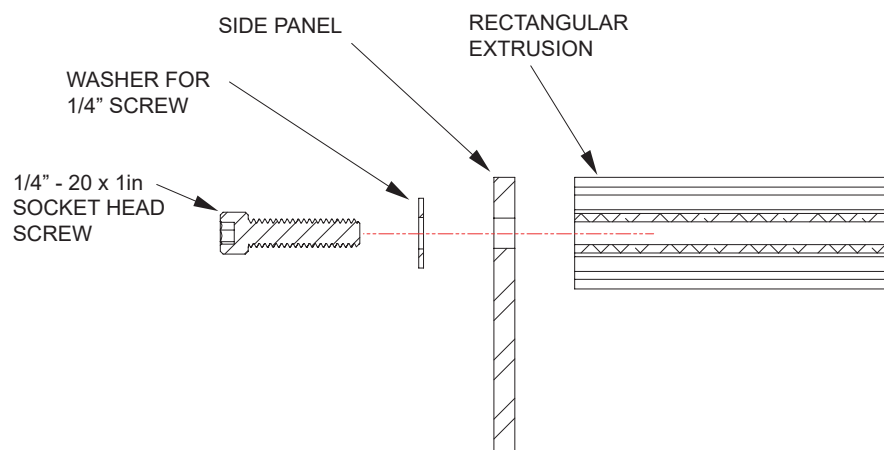
(EXPLODED VIEW)

# SIDE PANEL TO ROOF MOUNTING BRACKET



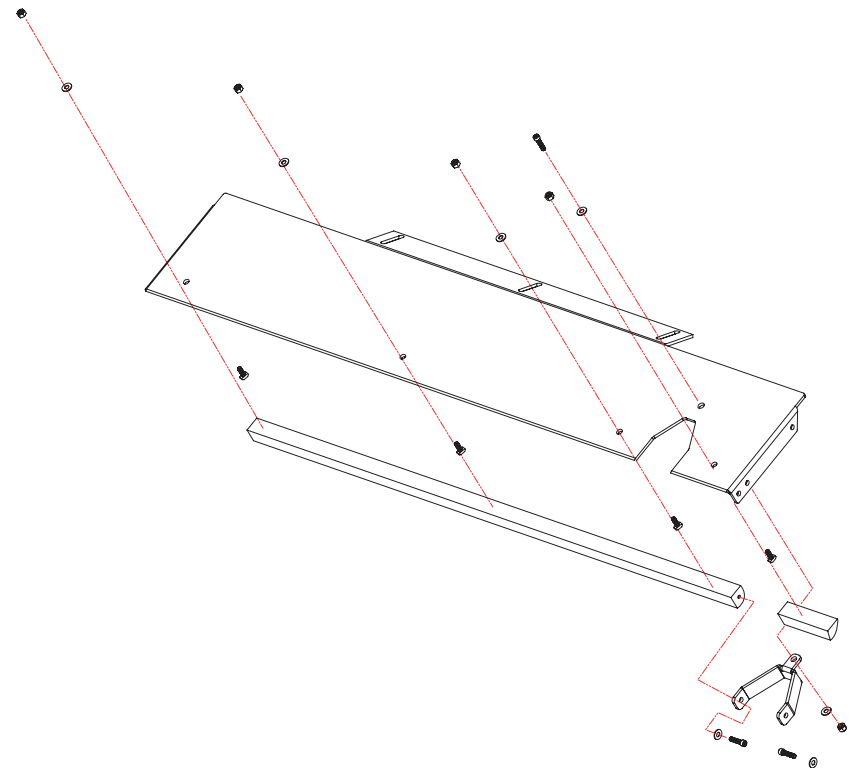
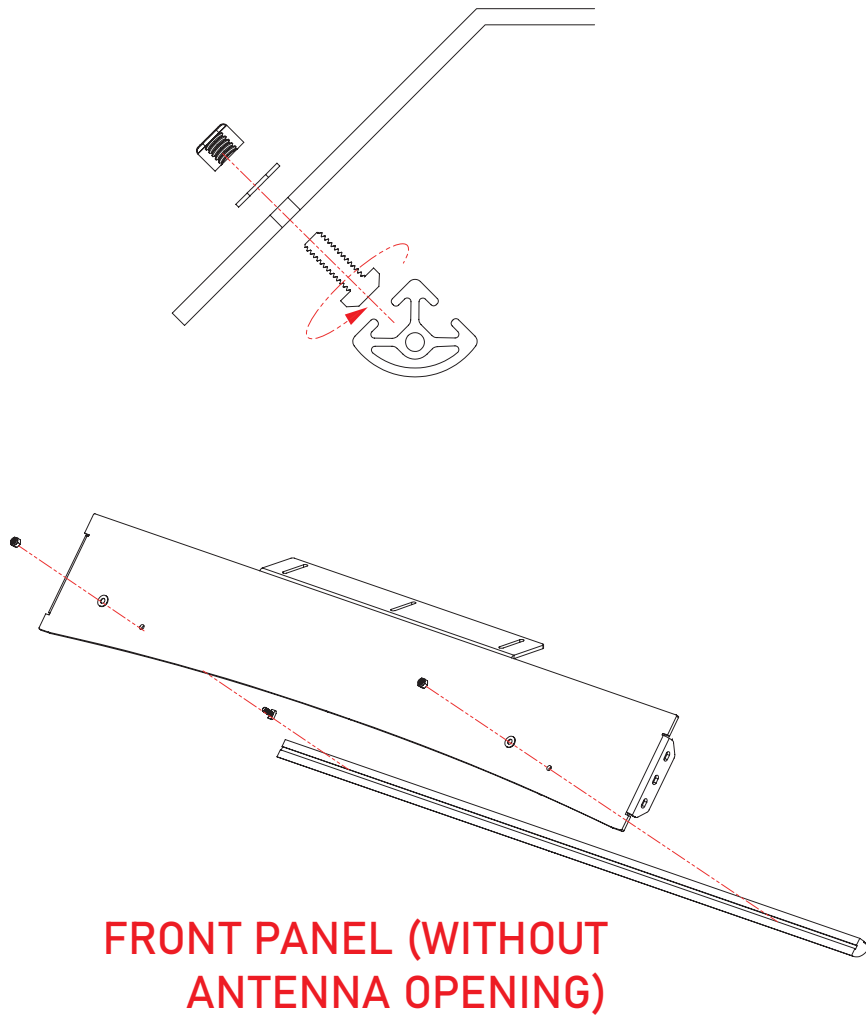
**\* TIGHTEN SCREWS**

# SIDE PANEL TO RECTANGULAR EXTRUSION



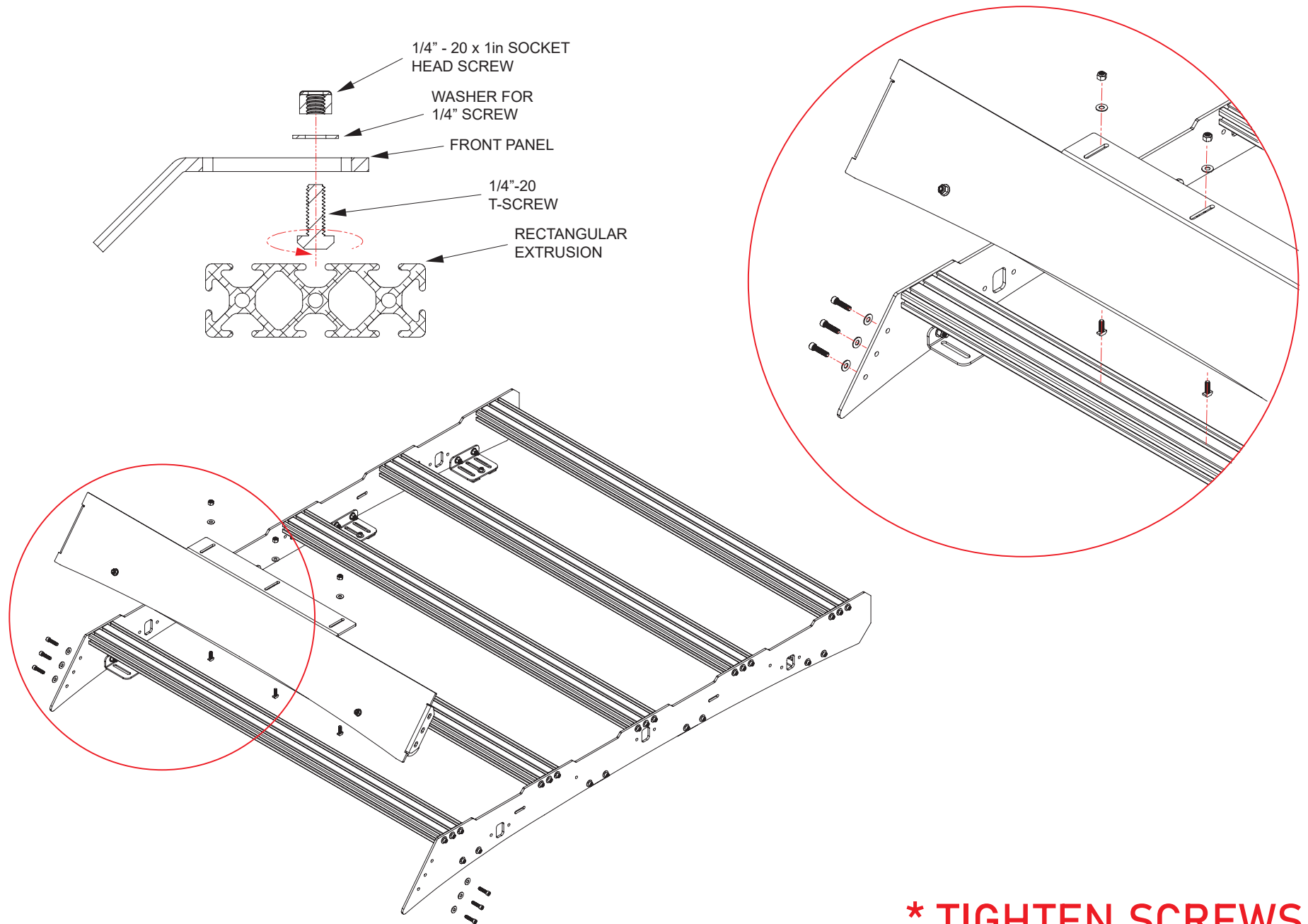
**\* TIGHTEN SCREWS**

# FRONT PANEL TO 1/4 ROUND EXTRUSION

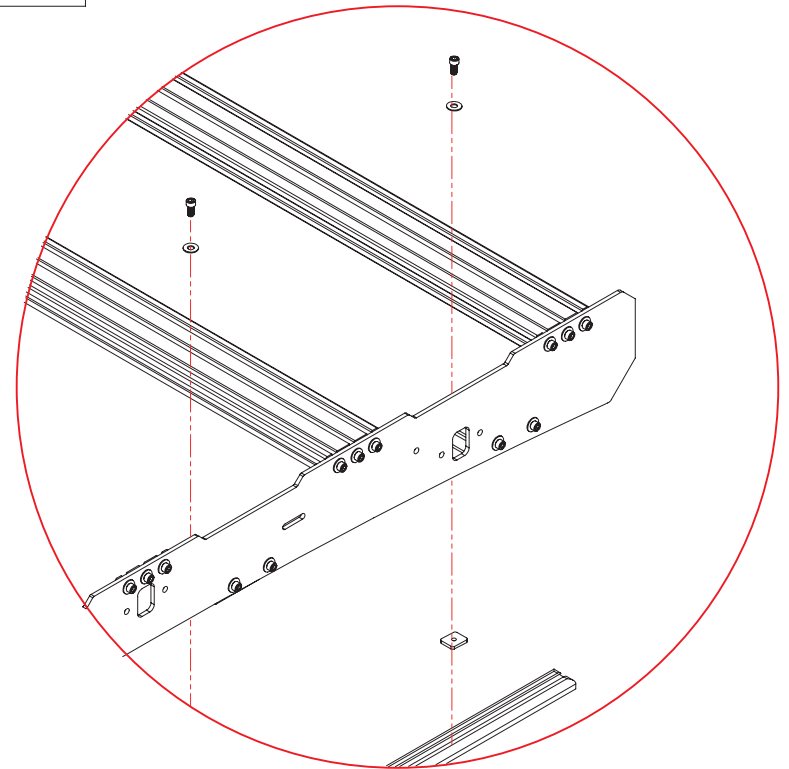
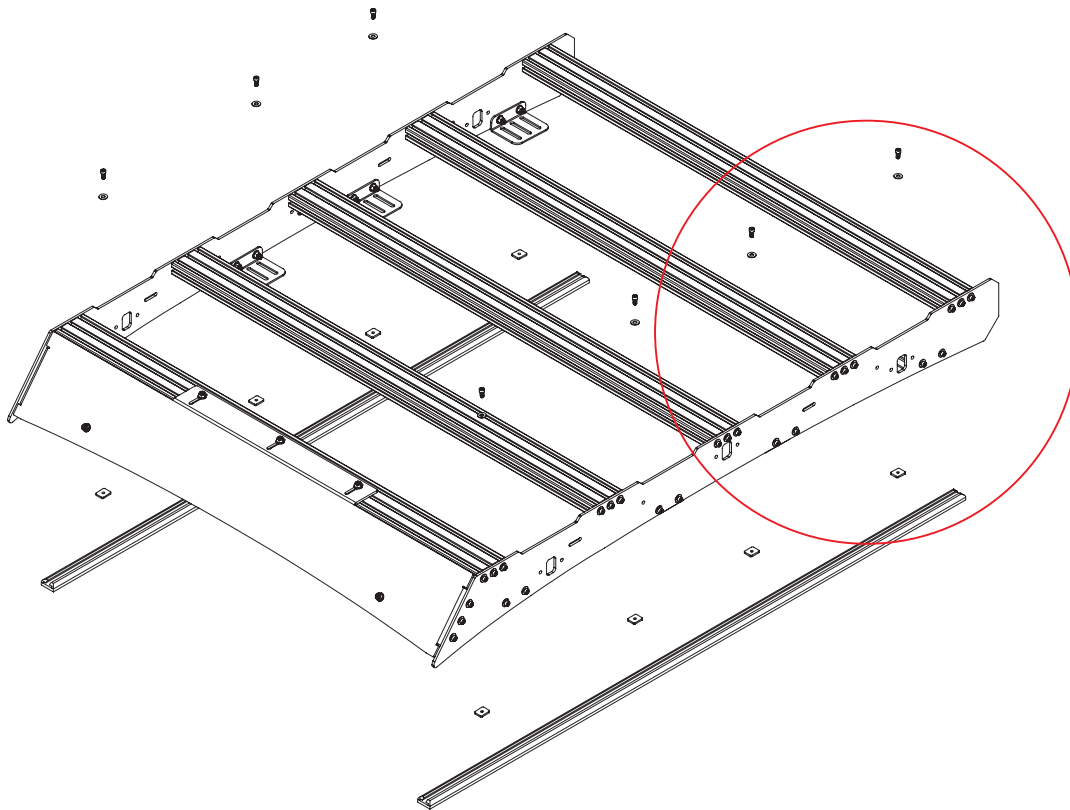
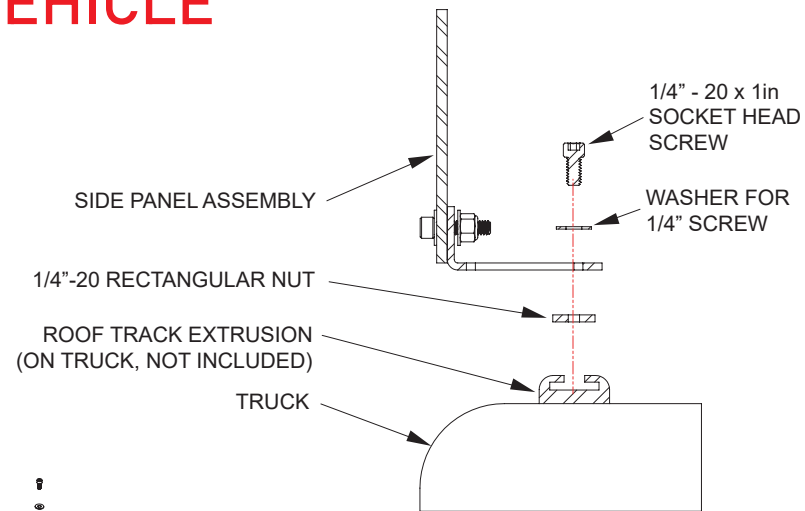


**\* TIGHTEN SCREWS**

# FRONT PANEL TO RECTANGULAR EXTRUSION



# ROOF RACK TO VEHICLE



**\* TIGHTEN SCREWS**

## CONFIRM ALIGNMENT

