



OVS

OVERLAND VEHICLE SYSTEMS

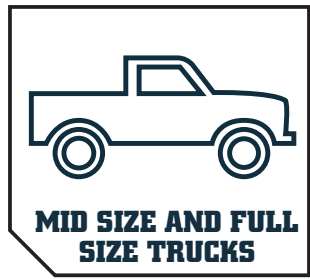
NEW PRODUCT ANNOUNCEMENT



MID HEIGHT RACK



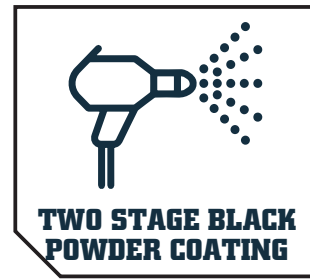
LIMITED LIFETIME WARRANTY



MID SIZE AND FULL SIZE TRUCKS



WEATHERPROOF DESIGN



TWO STAGE BLACK POWDER COATING



DIAGONAL BRACING MAXIMIZES LOAD BEARING

Features + Benefits

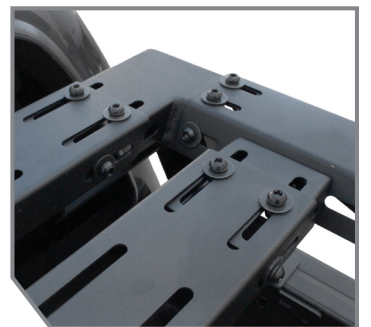
- Over 100 Mounting Positions for Accessories like Recovery Boards, Fuel Cans, Shovels, Tents, Lights, and More
- V-Bracing Reinforced Carbon Steel Frame
- No-Drill Installation, Works With or Without Utility Bed Rails
- Dimensions: L 56.6" x Base Width 54.58" - 59.54" Upper Width 49.61" - 54.62" x H 13.6"
- The Overland Bed Rack load carrying weight:

400 LBS
DYNAMIC WEIGHT CAPACITY



700 LBS
STATIC WEIGHT CAPACITY

- Compatible with:



ADJUSTABLE FRAME ALLOWS MID & FULL SIZE FITMENT



MOUNT TENTS, RECOVERY BOARDS, AND MORE!

YEAR	VEHICLE
2014 - 2024	CHEVY SILVERADO/GMC SIERRA 1500
2014 - 2024	SILVERADO/SIERRA 2500/3500
2002 - 2024	RAM 1500
2003 - 2024	RAM 2500/3500
2015 - 2024	FORD F-150
2020 - 2024	JEEP GLADIATOR

YEAR	VEHICLE
2022 - 2024	F-150 LIGHTNING
1999 - 2024	FORD F-250/F-350 SUPER DUTY
2004 - 2024	NISSAN TITAN
2016 - 2024	TITAN XD
2007 - 2024	TOYOTA TUNDRA

PART #	DESCRIPTION
22030304	MID HEIGHT TRUCK BED RACK FOR MID SIZE TRUCKS
22030305	MID HEIGHT TRUCK BED RACK FOR FULL SIZE TRUCKS



NO-DRILL INSTALLATION SYSTEM

CONTACT: OVERLANDVEHICLESYSTEMS.COM
P: (833) 226-4863

SOCIAL:

