

# WONWADIC ROOF TOP TENT







# NOMADIC ROOF TOP TENT



FOUR SEASONS READY

  
WATERPROOF

  
WINDPROOF

  
SNOW PROOF

  
BREATHEABLE



EXTERIOR CONSTRUCTION



INTERIOR CONSTRUCTION

Our Nomadic line of Tents, Annex's & Awnings are the best of the best. We use the finest materials to ensure nothing comes between you and your adventure. Our Nomadic tents start with a double insulated one-piece diamond plate frame featuring marine grade stainless steel hinges and hardware. Our 600D Premium Double Rip Stop Nylon body will handle the harshest conditions you can put yourself in.

**4** | **YEAR LIMITED WARRANTY**





# NOMADIC TENT-EXTERIOR



**FOUR SEASONS READY**

**420D POLYESTER  
OXFORD WATERPROOF  
MATERIAL**



**600D PREMIUM POLY  
COTTON DOUBLE RIP STOP**



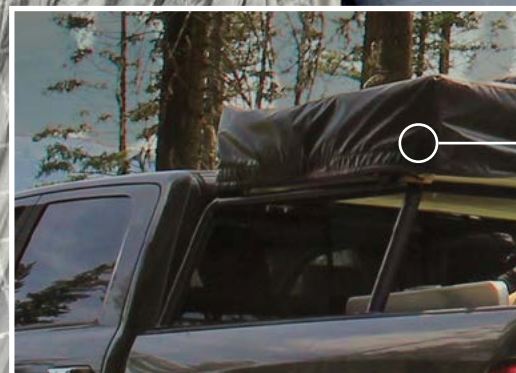
**DIAMOND PLATED  
ALUMINUM BASE**



**TUBULAR TELESCOPING  
LADDER W/ STRAP**



**1000G PVC TRAVEL COVER**



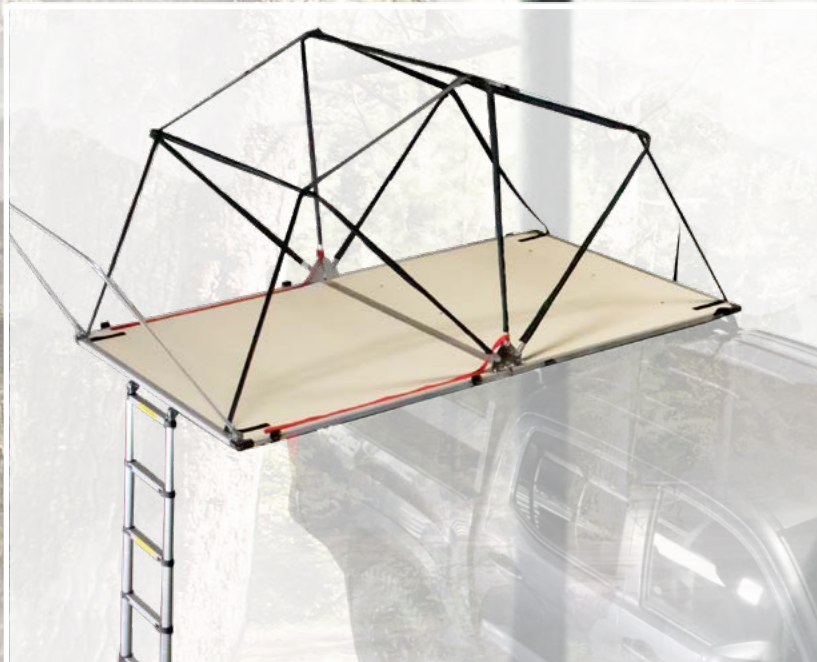




# NOMADIC TENT-INTERIOR



**FOUR SEASONS READY**



**INTERNAL TENT STRUCTURE**

**110G ENVIRONMENTAL  
FADELESS GAZE BREATHABLE**

**ANODIZE ALUMINUM  
LIGHT WEIGHT  
CONSTRUCTION W/ COVER**

**3" HIGH DENSITY FOAM  
MATTRESS WITH WASHABLE  
COTTON COVER**

**LARGE 6 INTERNAL POUCH  
WITH TWO EXTERNAL  
STORAGE POUCHES**

**MARINE GRADE  
STAINLESS STEEL HINGE**



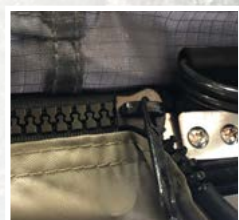




# NOMADIC ANNEX



**FOUR SEASONS READY**



**HEAVY DUTY ZIPPER**



**PAIR OF STORAGE POCKETS**



**420D POLYESTER OXFORD  
WATERPROOF MATERIAL**



**12 TIE DOWN POINTS**



**CARRYING BAG**



**EASY ACCESS DOOR**





# NOMADIC SPECIFICATIONS



FEATURES	NOMADIC 2 EXTENDED	NOMADIC 3 EXTENDED	NOMADIC 4 EXTENDED
Size Closed	55" X 47" X 14" (WxLxH)	63" X 47" X 14" (WxLxH)	75" X 47" X 14" (WxLxH)
Sleep Area	55" x 94.5" (WxL)	63" x 94.5" (WxL)	75" x 94.5" (WxL)
Size Open	55" X 122" X 51" (WxLxH)	63" X 122" X 51" (WxLxH)	75" X 122" X 51" (WxLxH)
Load Capacity	750 Lbs.	850 Lbs.	950 Lbs.
Weight	150	165	183
Occupancy	2 plus	3 plus	4 plus
Tent Part Number	18029936	18039936	18049936
Annex Part Number	18029836	18039836	18049836

Our **FREE BONUS PACK** is included with every purchase. The Bonus Pack consists of two memory foam pillows, a dustpan with a handheld broom, and finally a laptop table. These convenient items will make your stay in the tent a home away from home while on the trail.

## NOMADIC ROOF TOP TENT BONUS PACK



## LIMITED EDITION TENT



FEATURES	NOMADIC 3 ARCTIC EXTENDED
Size Closed	63" X 61" X 14" (WxLxH)
Sleep Area	63" x 94.5" (WxL)
Size Open	63" X 122" X 51" (WxLxH)
Load Capacity	850 Lbs.
Gross Weight	136Lbs
Net Weight	122 Lbs
Occupancy	3 plus
Tent Part Number	18039926
Annex Part Number	18039826

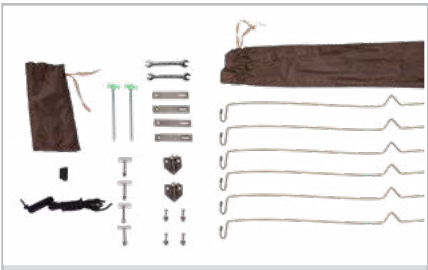
## WE GOT MORE TO OFFER



EXTERNAL STORAGE POUCHES



PORTABLE LED LIGHT



HARDWARE KIT



LOFT STYLE STORAGE



LIGHT STRIP



SKY LIGHT





9830 Norwalk Blvd Suite 130 Santa Fe Springs, Ca 90670  
P: (833) 226-4863  
[OVERLANDVEHICLESYSTEMS.COM](http://OVERLANDVEHICLESYSTEMS.COM)



*To Inspire and Empower People To ADVENTURE*

